

COM CPU PWR



EasyView



FEATURES

BEST

5.7"

4.3"



Powerful & Efficient

Powered by 32-bit RISC 200MHz CPU to provide high efficient processing performance!



Beautiful & Clear

Equipped with quality 480x272 wide TFT LCD to enable high resolution display.



Compact & Exquisite

Compact design with large screen makes the MT505T small and exquisite.



Economical & Handy

Saving costs by eliminating test display and a range of components.

CONTACT US



Address :

3F, 910 Chung Cheng Rd. Chung Ho City,
Taipei, Taiwan

TEL : (886)2-22286770

FAX : (886)2-22286771

Sales e-mail : salesmail@weintek.com

Support e-mail : servicemail@weintek.com

web : <http://www.weintek.com>

INTRODUCTION

Equipped with high efficient 32-bit RISC CPU, the new MT505TV surpasses other small-sized HMs in operation performance.

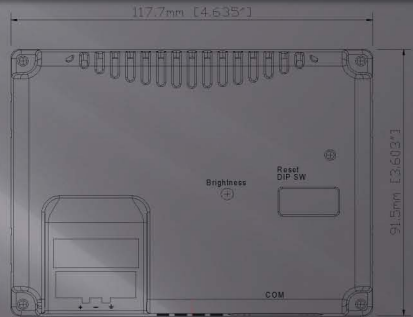
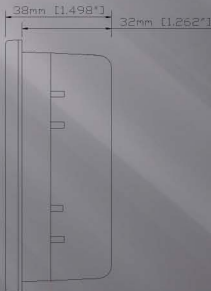
Compared to the 5.7" models of the same series, the MT505TV can save users up to 50% of space in size, but the compact design does not impair its performance and functionalities.

The quality color TFT LCD display and technology of LED backlight enables extension of the MT505TV's reliability and lifetime.

With the user-friendly EB500 software on board, users can easily create unique projects.

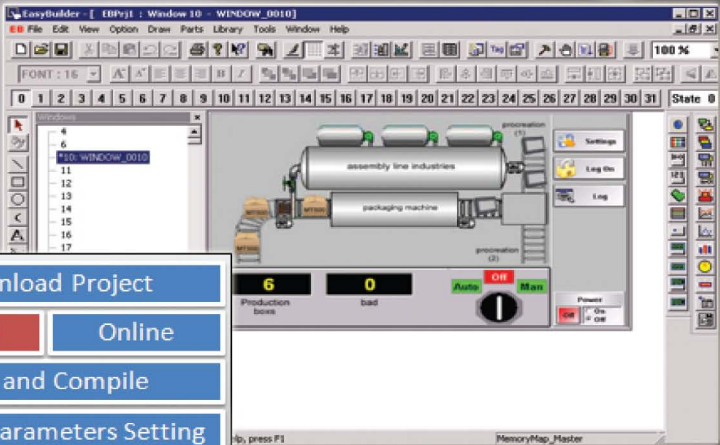


DIMENSION





Five easy operating steps



- Download Project
- Offline
Online
- Edit and Compile
- System Parameters Setting
- Start EB500

SPECIFICATION

- | | | |
|-------------------|------------------------|-------------------------|
| Display | 4.3" | |
| Brightness | 300cd/m | |
| Color | 256 color | |
| Contrast Ratio | 400:1 | |
| Resolution(WxH) | 480x272 | |
| Back Light | LED | |
| Touch Panel | 4 wires resistive type | |
| Touch Accuracy | 1.5mm | |
| Surface Hardness | 4H | |
| Serial Interface | PC(RS232) | |
| | PLC(RS232/RS485) | |
| Processor | 32 bit RISC CPU 200MHz | CE |
| Flash Memory | 2MB | Complies with EN50081-2 |
| DRAM | 4MB | EN50082-2 standards |
| Input Power | 12~28VDC, | EMI |
| | 0.3A@12V 0.15A@24V | Complies with |
| Power Consumption | 24V/150mA / 3.6W | FCC Class A |
| | 2V/300mA / 3.6W | Operating Temperature |
| Dimensions WxHxD | 128x102x38mm | 0~45 C (32~113F) |
| Panel Cutout WxH | 119x93mm | Storage Temperature |
| Weight | Approx 0.3kg | -30 ~ 70 C (240hrs) |
| | | Relative humidity |
| | | 10%~80%@40 C, |
| | | non-condensing |
| | | Shock(Operation) |
| | | 10~25Hz |
| | | Front Panel meets |
| | | NEMA4/IP65 |